

Kapatiran Project and OSHS Update

Director Brenda L. Villafuerte, CESO III

BUREAU OF WORKING CONDITIONS

Department of Labor and Employment



SPK General Membership Meeting

June 9, 2009

Petron Mega Plaza, Makati City

DOLE Strategic Goals



1. Gainfully employed
2. Globally competitive
3. Secure
4. Safe and healthy

PHILIPPINE
WORK
FORCE
2020
VISION



**Existing
BWC
Programs
On OSH**

Training and Accreditation

**Safety Recognition
(SMile Award)**

Work-ALERT

WAIR

Kapatiran-WISE-TAV

**Kapatiran para sa mas Ligtas,
Produktibo at Malusog na mga Manggagawa**



KAPATIRAN WISE-TAV

A Safety and Health CSR Project

What is KAPATIRAN WISE-TAV?

PARTNERSHIP

PRIVATE SECTOR

- Large Companies
(*BIG Brothers*)
- Micro, Small & Medium Enterprises *MSMEs (Small Brothers)*



GOVERNMENT

- DOLE-BWC
- DOLE-ROs, NWPC, ECC, OSHC
- DTI, DOH, DENR...
- LGUs



What is KAPATIRAN WISE-TAV?



Safety & Health in Workplaces

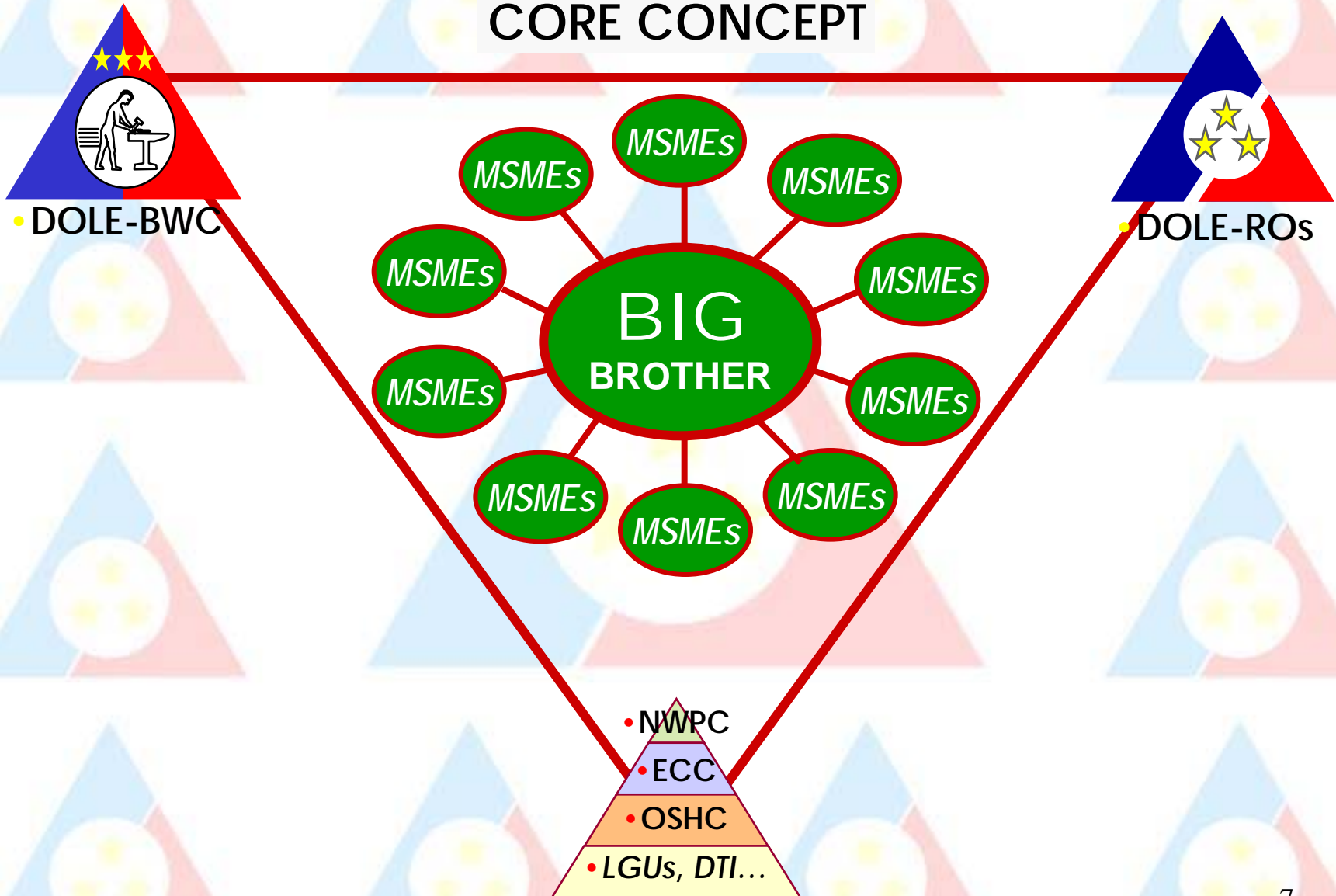
- ⇒ Compliance with **G**eneral **L**abor **S**tandards
- ⇒ Harmonious relationships
- ⇒ Increased productivity

CSR

- ⇒ Corporate Social Responsibility
- ⇒ Community Service Response
- ⇒ Compliance with OSH Standards

"KAPATIRAN WISE-TAV" Conceptual Framework

CORE CONCEPT



 **Project Mission:** 

OSH compliant MSMEs



Increased Productivity



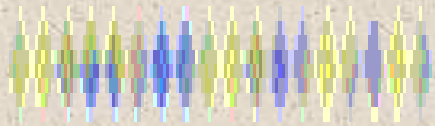
GLS Compliant MSMEs

Project Mission:

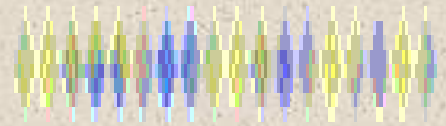
Increased Productivity & Improved Quality
thru Safety and Health =



**Globally Competitive
MSMES**



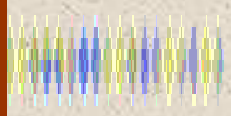
Project Goals:



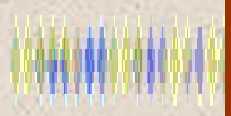
- ➔ **To increase the number of MSMEs compliant with Occupational Safety and Health Standards.**
- ➔ **To develop a working model of sustainable OSH programs in the workplace for MSMEs that can be replicated nationwide.**

Project Background:



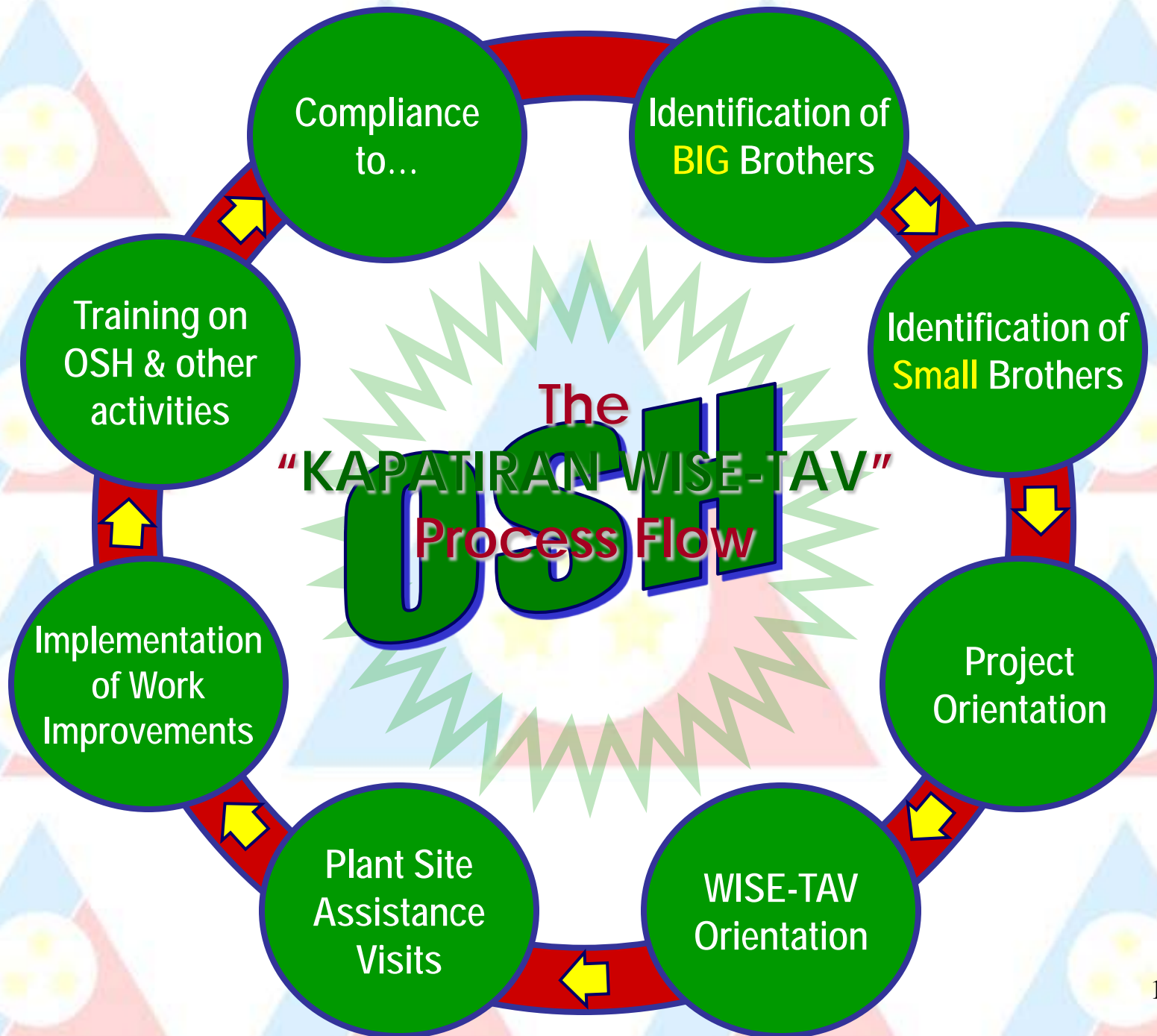


Expected Outputs of the KAPATIRAN WISE-TAV Project:



- ➔ **Improvement in the work conditions of participating establishments leading to full compliance with OSH Standards.**
- ➔ **No Lost Time Accidents (*NLTA*) among participating establishments.**
- ➔ **Worksite harmony, increased productivity and improved quality of services and products.**

The
"KAPATIRAN WISE-TAV"
OSH
Process Flow



The KAPATIRAN WISE-TAV

Nationwide Implementation

Quezon
Pilot
Project

NCR

Region 1

Region II

Region III

Region IV

Region V

Region VI

Region VII

Region VIII

Region IX

Region X

Region XI

Region XII

CARAGA

CAR

Identified BIG Brothers & their Respective Focus Areas (Region IV-A)

BIG Brothers



Lucena
8 MSMEs

Pagbilao
30 MSMEs

Lucena
6 MSMEs

Small Brothers

NCR KAPATIRAN WISE-TAV

AMKOR

Muntinlupa
11 MSMEs

PLDT

Makati
16 MSMEs

UNILAB

Mandaluyong
16 MSMEs

NESTLE

Makati
19 MSMEs

PETRON

Makati
MSMEs

MERALCO

Pasig
MSMEs

PILIPINAS
SHELL

Makati
MSMEs

SMPSI

Manila
MSMEs

UNILEVER

Manila
MSMEs

Pandacan
Depot
Services

Manila
MSMEs

AT LEAST 10 SMALL BROTHERS FOR EACH BIG BROTHER



KAPATIRAN WISE-TAV Updates **(NCR and RO IV-A)**

as of March 2009

KAPATIRAN-WISE Updates, NCR and RO IV-A

as of March 2009

BIG Brother	Number of Small Brothers	Number of Workers Covered
TEAM ENERGY	24	1,684
PLDT-QUEZON	6	147
MERALCO	8	260
AMKOR	11	669
NESTLE	19	4,800
PLDT-NCR	15	5,839
UNILAB	16	5,741
KBUMPC	4	256
EJC PACKAGING	1	322
KAMAYAN SA PALAISDAAN	3	51
PALAISDAAN RESTAURANT	2	11
TAYABAS COMMUNITY HOSPITAL	3	103
SILANGANG NAYON	1	24
A & G COCONUT	3	40
Total	116	19,947

Compliance with OSH Rules Among Small Brothers During the 1st Visit and During Follow-Up

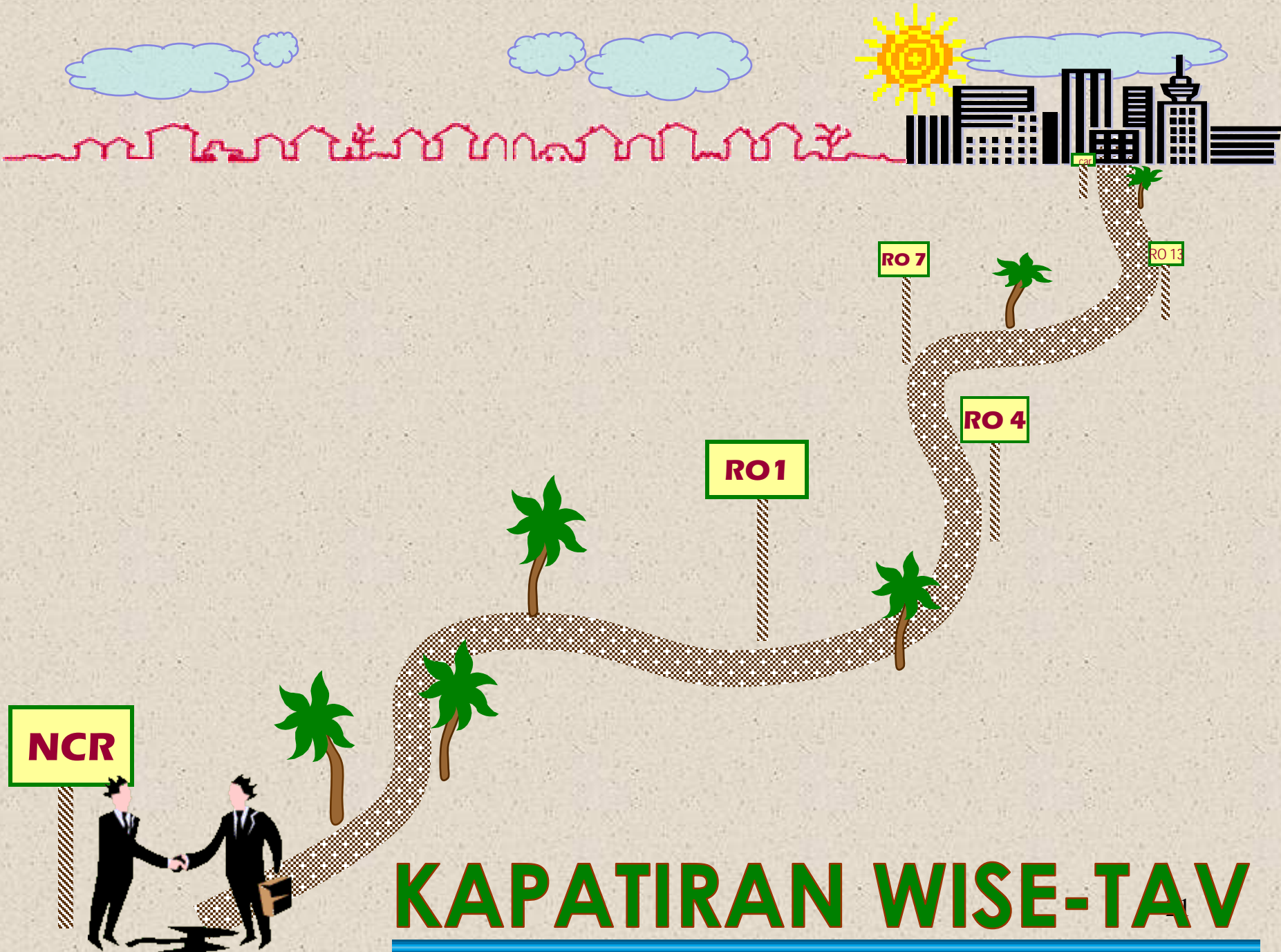
Occupational Safety and health (OSH Rule)	Compliance During 1 st Visit, As of March 2009 (N=91)	Compliance During Follow-Up, (N=91)
Emergency Exits	10 (11%)	45 (49%)
Registration of Establishments	3 (3%)	56 (61%)
Storage and Handling	17 (19%)	45 (49%)
Health Personnel	9 (10%)	30 (33%)
Safety Officers	13 (14%)	28 (31%)
Employee Accident/ Illness Report	6 (7%)	24 (26%)
Annual Accident/ Illness Report	12 (13%)	37 (41%)
Annual Medical Report	12 (13%)	29 (32%)
Health and Safety Organization	7 (8%)	23 (25%)

*N=91: TEAM E-24, PLDT Quezon-6, AMKOR-11, NESTLE-19, PLDT NCR-15, UNILAB-16

Compliance with OSH Rules Among Small Brothers During the 1st Visit and During Follow-Up

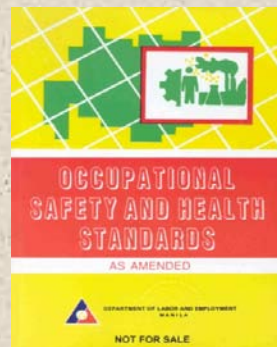
Occupational Safety and Health (OSH Rule)	Compliance During 1 st Visit, As of March 2009 (N=91)	Compliance During Follow-Up, (N=91)
Good Housekeeping	20 (22%)	48 (53%)
Medical Facilities	20 (22%)	23 (25%)
Lighting	16 (18%)	42 (46%)
Personal Protective Equipment	7 (8%)	30 (33%)
Minutes of HSC Meeting	12 (13%)	19 (21%)
Waste Disposal	15 (16%)	40 (44%)
Fire Protective Equipment	21 (23%)	49 (54%)
Continuing Training on OSH	16 (18%)	91 (100%)
HIV?AIDS Policy/ Program	24 (26%)	33 (36%)
Drug-Free Workplace Program	23 (25%)	33 (36%)

*N=91: TEAM E-24, PLDT Quezon-6, AMKOR-11, NESTLE-19, PLDT NCR-15, UNILAB-16



KAPATIRAN WISE-TAV

**Recent
policy
issuances
on OSH**



Recent Issuance



Department Order No. 92-08

**Directing the BWC to decentralize Accreditation
of OSH Practitioners to the Regional Offices.**

**Signed on April 22, 2008
by Acting Secretary Marianito D. Roque**

**Published on May 28 and June 5, 2008, Phil.
Daily Inquirer**

DEPARTMENT ORDER NO. 92
Series of 2008

**Decentralizing Accreditation of
OSH Practitioners to ROs**

**Coverage – evaluation, approval of
*application for accreditation of
OSH Practitioner including issuance of
Certificate of Accreditation by the
Regional Office.***

DEPARTMENT CIRCULAR NO. 2
Series of 2008

**AMENDING CERTAIN PROVISIONS OF THE OCCUPATIONAL
SAFETY AND HEALTH STANDARDS**

The amended provision provides:

“1003.03: Application to Transportation:

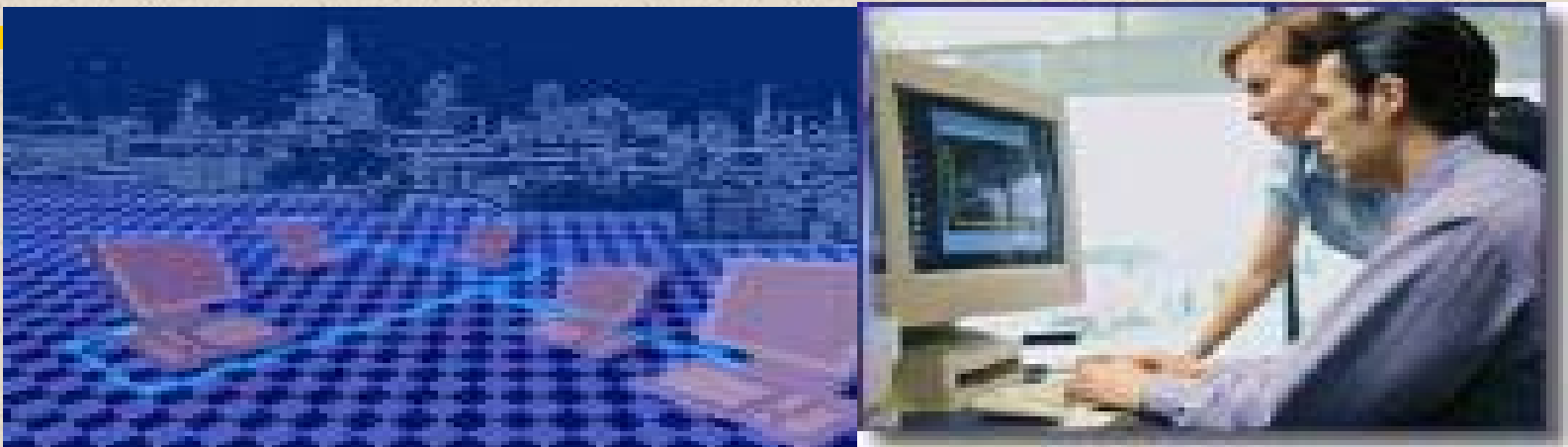
***Establishments engaged in land, sea and air
transportation are likewise covered by these
standards.”***

DEPARTMENT CIRCULAR NO. 1

Series of 2008

POLICY GUIDELINES GOVERNING THE OCCUPATIONAL SAFETY AND HEALTH OF WORKERS IN THE CALL CENTER INDUSTRY

- **Coverage - *all establishments, workplaces, operation and undertakings in the call center industry***



DEPARTMENT CIRCULAR NO. 1

Series of 2008

POLICY GUIDELINES GOVERNING THE OCCUPATIONAL SAFETY AND HEALTH OF WORKERS IN THE CALL CENTER INDUSTRY

- **Workplace policy on occupational safety and health**

- **Components of the Occupational safety and health**
 - ✓ *Hazard and risk prevention control*
 - ✓ *Capability building for Safety and Health Committee members*
 - ✓ *Referral and access to medical and welfare services*

- **Roles and responsibilities of employers and workers**

- **Enforcement and monitoring**

DEPARTMENT CIRCULAR NO. 1

Series of 2009

GUIDELINES ON OCCUPATIONAL SAFETY AND HEALTH IN THE SHIPBUILDING, SHIP REPAIR AND SHIPBREAKING INDUSTRY

- **OSH policy and program**
- **OSH Committees**
- **Cost for Implementing OSH Programs**
- **Emergency and Personnel Facilities**

- **Roles and responsibilities of employers and workers**

- **Enforcement and monitoring**

Department Advisory No. 4, Series of 2009

GUIDELINES ON INFLUENZA A (H1N1) PREVENTION AND CONTROL AT THE WORKPLACE

Coverage: all employers and workers in the private sector

Provides the following:

- a. Precautionary measures at the workplace***
- b. Guidance for the Care of Workers with fever/who are ill***
- c. Leave of absence/entitlements***
- d. Assistance to be provided by DOLE***



Have a SAFE day!